

## Application

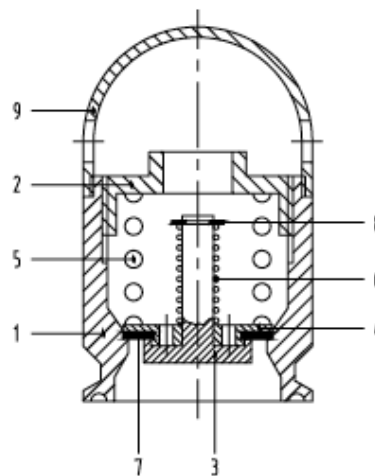
Vacuum pressure valves are designed to relieve excess pressure and excess vacuum in tanks.

As soon as the pressure in the tank exceeds the preset maximum pressure the valve opens and relieves the excess pressure. Once the pressure returns within the preset range the valve closes again. Furthermore, as soon as the vacuum in the tank exceeds the preset maximum vacuum the valve opens. Again, once the vacuum returns within the preset range the valve closes again.

## Features

The valve opening pressure is adjustable from 0.1 to 1.3 bar.

## Components



PARTS LIST		
1	Valve casing	Aisi 304L
2	Adjusting cap	Aisi 304L
3	Head seal	Aisi 304L
4	Diaphragm	Aisi 304L
5	Pressure spring	Aisi 304L
6	Vacuum spring	Aisi 304L
7	Seal	Silicone
8	Snap ring	Aisi 304L
9	Cap	Aisi 304L